

SOTECA
electric

Utilities & Infrastructure

Industries



+30

Years of experience



+250

Employees



47%

Qualified project management staff



SOTECA Electric is an energy & automation EPC Tunisian company founded on 1994 and specialized in:

- ▶ Panel Building
- ▶ Automation
- ▶ Electrical & Instrumentation Construction
- ▶ Smart traffic lights
- ▶ Maintenance & Technical Assistance
- ▶ Water treatment & Industrial Pumping
- ▶ Firefighting
- ▶ Intelligent public lighting

SOTECA Electric is a Schneider Electric approved panel builder, as well as a Siemens solutions integrator and distributor. We represent FUJI Electric for speed and frequency variables, GANZ for MT moteurs, transformers, and synchronous condenser machines, COMECA for Plug-In Panels, and ARKEN for generators. We are also the authorized representative of Masdaf for centrifugal pumps and Esavior for Led Solar Lighting Solutions.

We are certified ISO 9001:2015, ISO 45001:2018 & ISO 14001:2015, and our switchboards carry the CE mark (European conformity).

SOTECA Electric is active in following Business Segments:

- ▶ Oil & Gas and Petrochemical Industries
- ▶ Food & Beverage Industries
- ▶ Utilities & Infrastructure Industries
- ▶ Material & Mining Industries
- ▶ Building Industry

Certificates



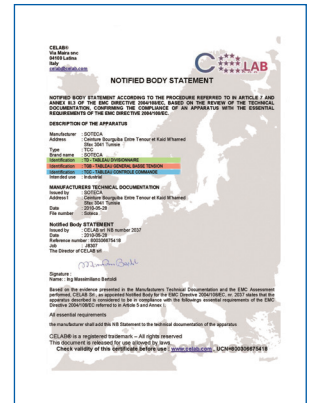
ISO 9001: 2015 Certificate



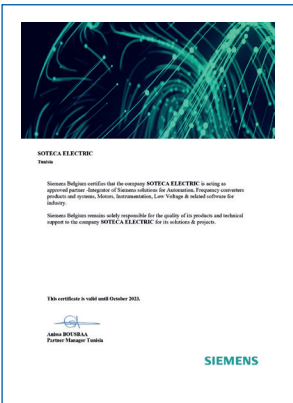
ISO 14001: 2015 Certificate



ISO 45001: 2018 Certificate



CE Marking Certificate



Siemens Integrator & Distributor



Comeca Certificate



Schneider Panel Builder



Esavior Certificate



Masdaf Certificate



Ganz Certificate



Fuji Electric Certificate



Arken Certificate

Training Certificates



AutoCad Certificate



Cathodic Protection Certificate



Industrial Instrumentation Certificate



Work at height



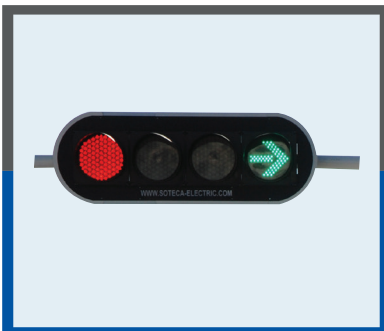
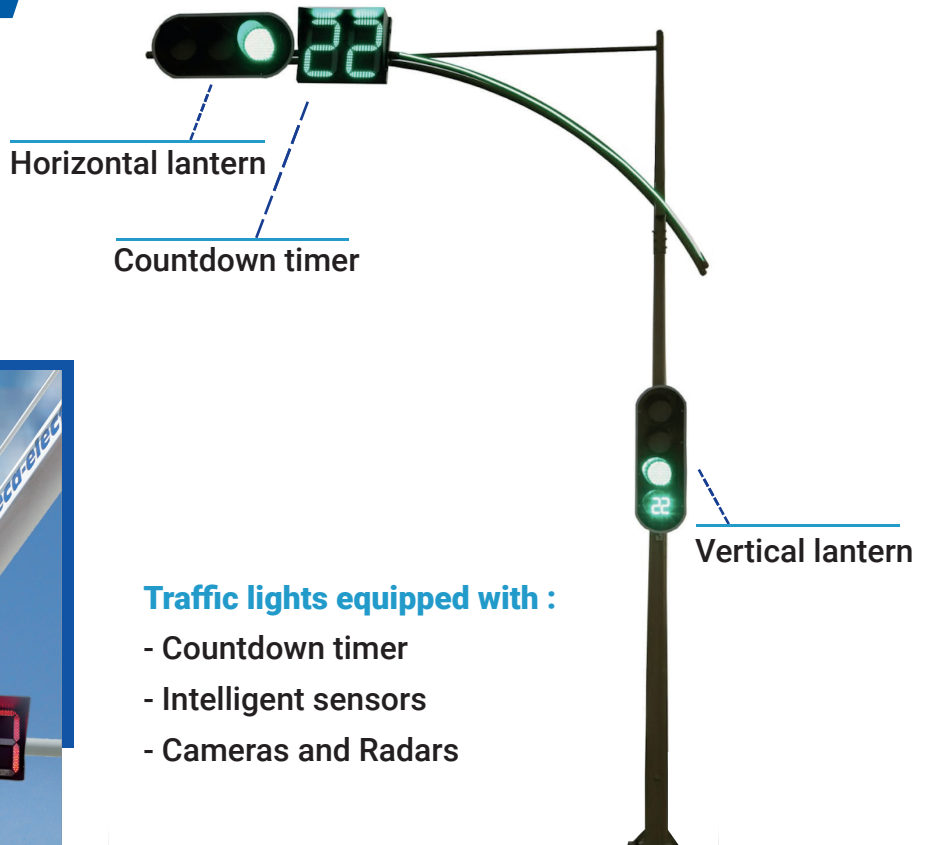
Preparation for Electrical Clearance for LV and HV Electricians



ATEX Certificate



Traffic lights



Horizontal lantern



Pedestrian lantern

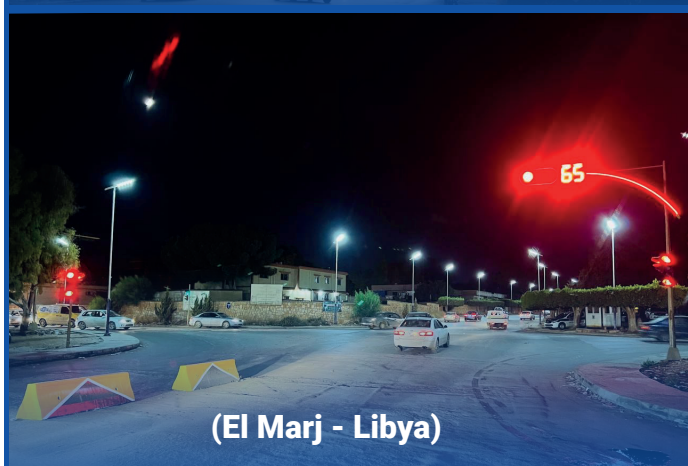


Vertical lantern

Three-colour lantern:

- Horizontal and vertical mounting with diameter 300 mm and 200 mm
- LED signalling with high luminosity
- Low energy consumption
- Guarantees 24 / 7 operation in the most difficult conditions
- Fixed and animated pedestrian lantern

Traffic lights



The countdown timer

- Self-learning cycle timing
- Three-colour LED lighting
- High brightness
- Low energy consumption
- Allows road users to know the remaining time
- Easy and possible integration even in old intersections

Traffic lights

Intelligent vehicle presence detector

Technical advantages:

- Improved quality and speed of traffic flow
- Flexibility and ease of use
- Easy and flexible remote programming
- Possibility of census and statistics in the use of the road
- Automatic adjustment of traffic light cycle times according to traffic pressure

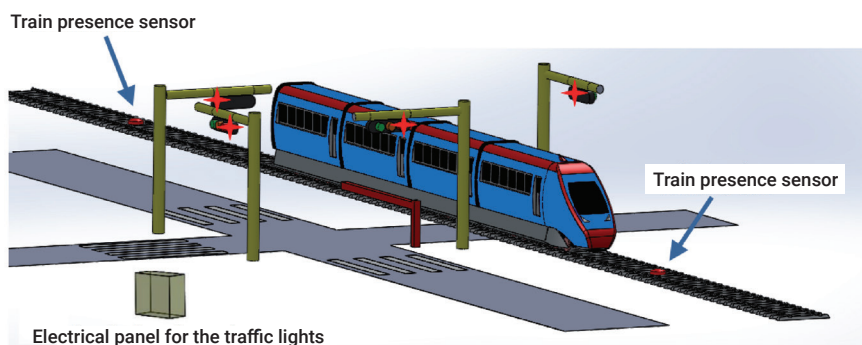
Environmental advantages:

- Allowing users to save energy by reducing waiting time
- Reduction of gas emissions



Crossroads traffic light equipped with car presence detector
Bypass Kaied Mohamed - Sfax

Synchronisation with the passage of the train and/or the metro

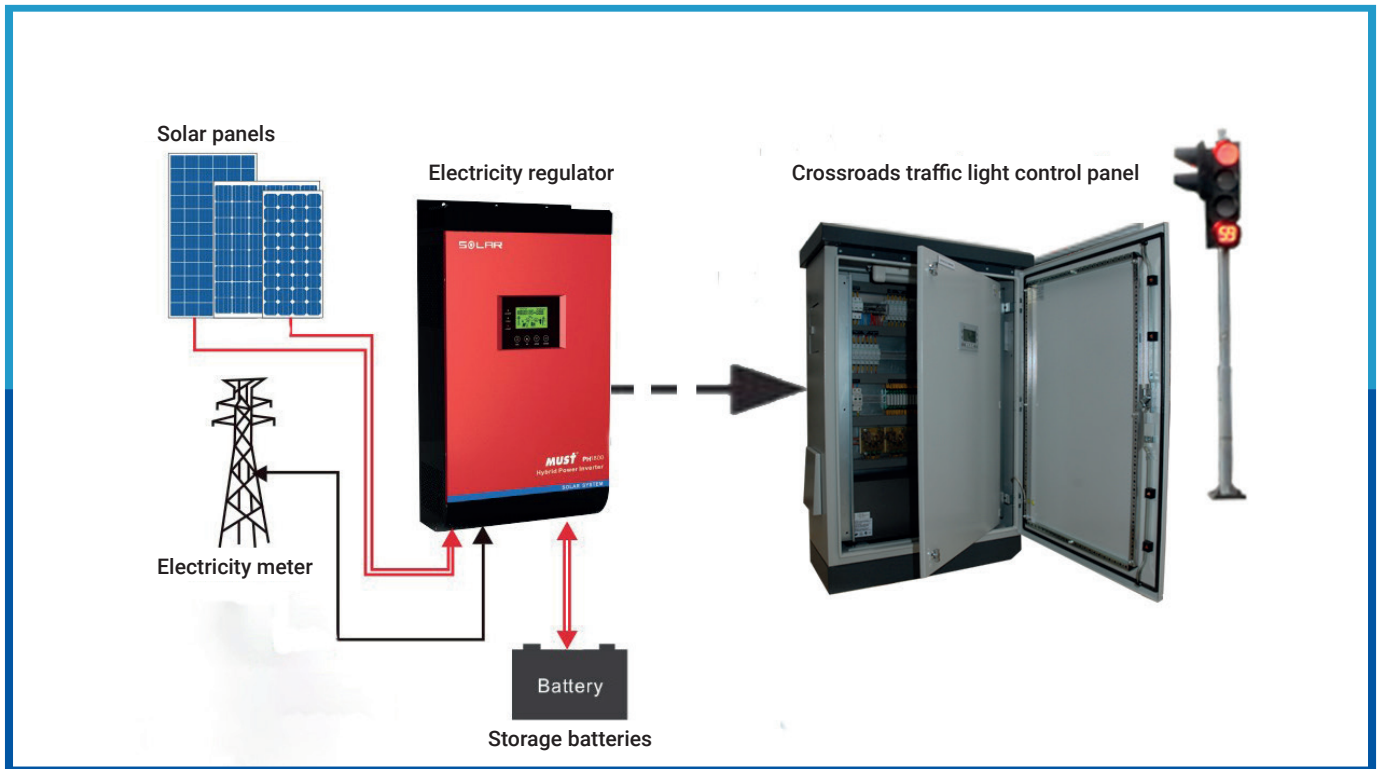


In case of an intersection with railway tracks, whether metro or train, the automatic traffic light system can adapt and automatically change the traffic system when trains and metros pass by in order to ensure the safety of the users of the traffic light intersection.

References:

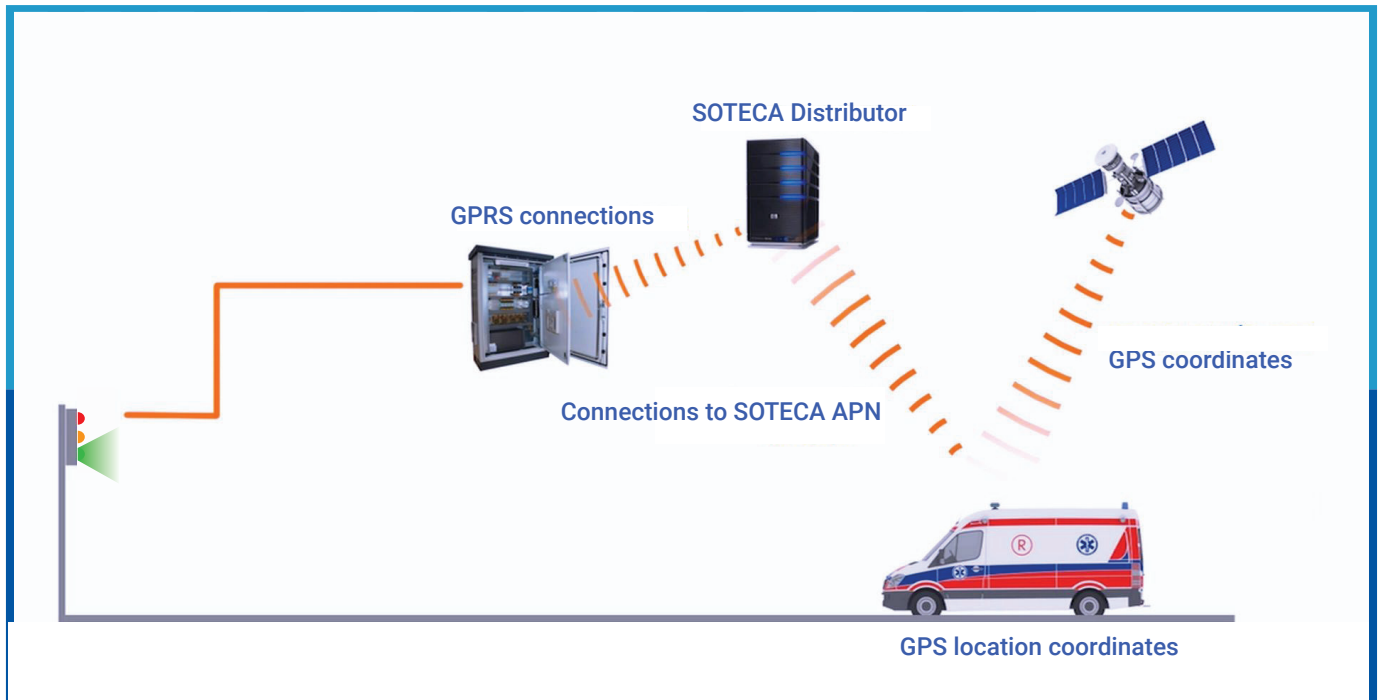
Crossroads lights Sakiet Ezzit road, Mahdia road, Ben Achour road (Sfax)

Solar traffic lights



The solar control panel reduces frequent power cuts and is also suitable for remote sites. Solar energy is the main source of electrical power with continuous storage in high efficiency batteries that allow it to continue to operate at night in the absence of the power supply.

Priority vehicle system



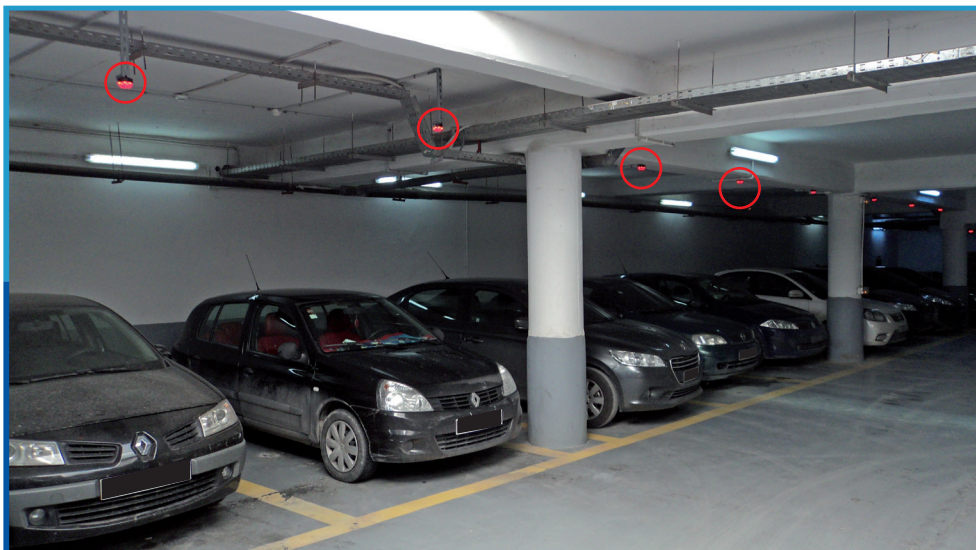
The automatic traffic light control system developed and programmed by the SOTECA Electric team, features a traffic priority system for ambulances or public buses which are equipped with a GPS tracking system, to ensure automatic change of traffic status, to allow them to pass without stopping.

Closed car parking

- Car parking equipped with car presence sensors
- Display for available parking areas
- Directional display for vacant spaces
- Reservation application on smartphone



Display for outdoor use



Vehicle presence sensors

Ooredoo car parking shores of Tunis lake - Tunisia

Intelligent parking



Open area parking

Radio / Wifi sensor

- Sensor for available spaces
- Battery life > 5 years
- Remote configuration, management, setting and maintenance
- Communication by radio / Wi-Fi



Outdoor display

- Display of available spaces



Communication box

- Wireless communication system between devices (3G/4G, radio, Wi-Fi)

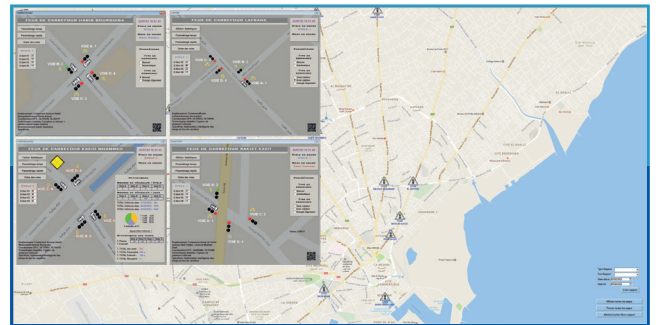
Remote control screen

- Control and traffic management, car parking including surveillance cameras and all smart city related applications.
- Change and update traffic light settings and perform remote maintenance.
- Documentation and storage of all updated data.



SCADA system :

- Remote control and monitoring
- Remote intervention
- Modification of parameters and operating modes (with/without sensor, automatic manual)
- Presentation of measurement data, taking of statistics in real time
- Number of vehicles per track
- Total number of vehicles passing per day
- Archiving of all data
- Setting of sensor parameters



Supervisory view (SCADA)

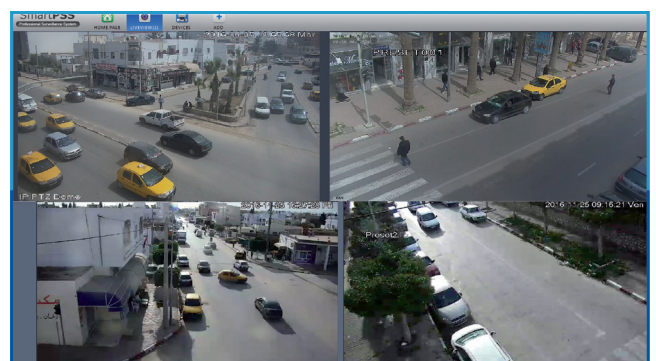


Sensor view

By-pass Kaied Mohamed Sfax

Visualisation of intersections:

- Instantaneous visualization of traffic through surveillance cameras
- Anti-vandalism



Camera view

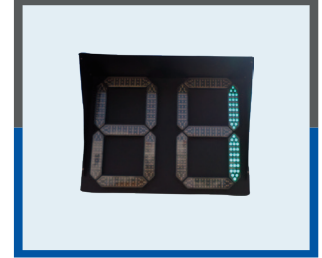
**Mahdia Road / Habib Bourguiba Avenue /
El Aïn Road - Environment Avenue /
By-pass N°4 El Aïn Road - Sfax**



**Round countdown lantern
(Small size)**



**Square countdown lantern
(Large size)**



Horizontal lantern



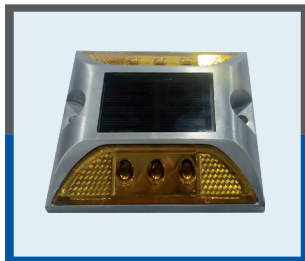
Pedestrian lantern



Vertical lantern



Solar lantern



Photovoltaic road signs

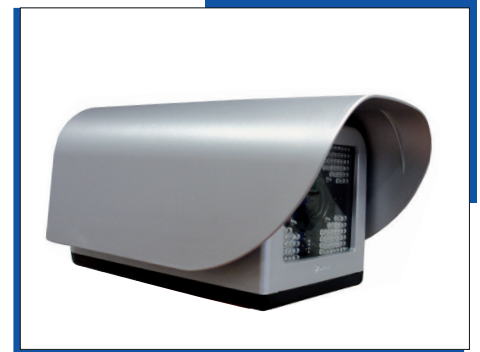


LED RGB



Barrier for private parking

- Safety of vehicle and pedestrian crossing at intersections
- Photos, video and information on red light violation
- Images and information on vehicle registration plates.



Radar camera

- Rotating cameras for 360° movements
- High precision with high definition optical zoom
- Remote configuration and learning interface

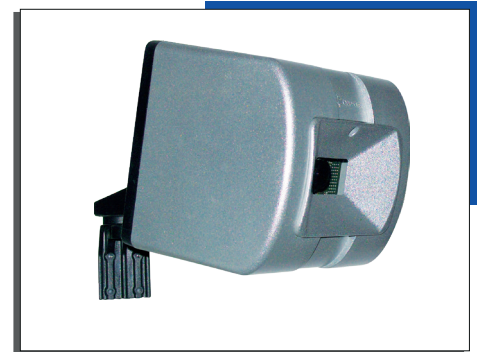


Surveillance camera

- The sensors allow the adjustment of the time of the traffic light, ensuring continuous movement at the intersection and better utilisation, which saves energy, reduces gas emissions and relieves psychological pressure on drivers.

- The sensors have an on-board web interface that provides:

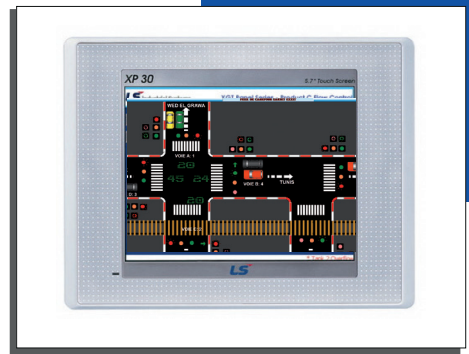
- Detecting the presence of vehicles
- Calculation of the number of vehicle passages
- Remote configuration of detection zones
- Visualisation of the flow
- Software update



Presence sensor



Crossroads light control cabinet



HMI Touch Screen Control



- Outdoor use IP54
- Durable double metal case
- PLC with XP 30 display (touch screen with high resolution colours)
- Adjustment and setting of traffic light cycles
- Display of traffic light status
- Visualisation of traffic light and control cabinet errors

Other solutions:

PLC controller

Controller with output units (12, 24, 32) that allows operating cycles to be programmed manually or automatically.

References:

Crossroads lights Gremda, Lafrane, El Aïn, Sakiet Ezzit, Kaied Mohamed, Gabes road, Habib Bourguiba avenue, Mahdia road (Sabra Building), Street 5 Août Majida Bouleila, Intersection of the fishing port road, Teniour road, etc.

Intelligent public lighting

Esavior[®]
Energy Savior, Save Mother Earth

Features and benefits :

- Up to 5 days autonomy in cloudy and/or rainy weather
- Customised and flexible operating modes with timer and programmable motion detector

Applications :

- Lighting of highways & motorways
- Lighting of streets & public roads
- Lighting of public spaces (parks, car parks, etc.)

Available powers in Watts :

Power (Watts) 50 60 80 90 120 150 200

Product warranty: 3 years

Product lifetime: 10 years



El-Marj (Libya)



Musical fountain

Dancing musical fountain with programmable scenarios



Fountain of the Republic Place - Sfax (Tunisia)



International Presence

Your Reliable Partner for Energy & Automation Solutions
in Africa, Europe & Middle East



Tunisia



Libya



Algeria



Mauritania



Ivory Coast



Mali



Guinea-Conakry



Senegal



Burkina Faso



France



Italy



Iraq



Saudi Arabia



Chad



Gabon



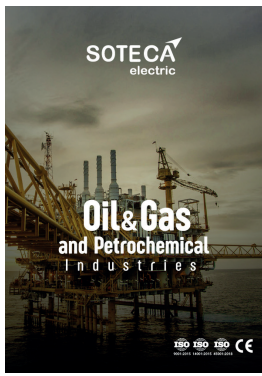
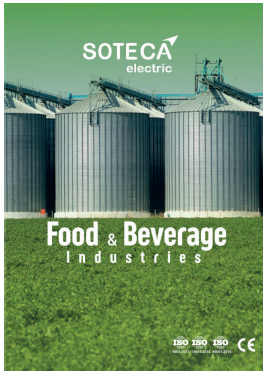
Burundi



Djibouti



Mauritius



SOTECA electric

Your Reliable Partner for Energy & Automation Solutions

[in](#) [f](#) [@](#) SOTECA Electric



Phone: (+ 216) 74 660 360
Fax: (+ 216) 74 660 374



E-mail: contact@soteca.com.tn



By-pass Km 4 between Teniour and Kaied
Mohamed 3041 Sfax - Tunisia



www.soteca-electric.com